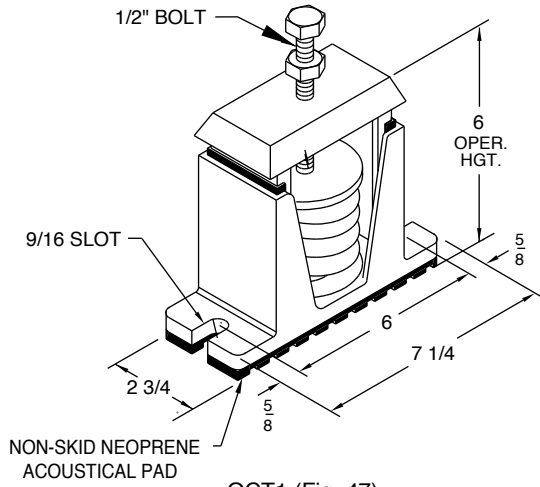
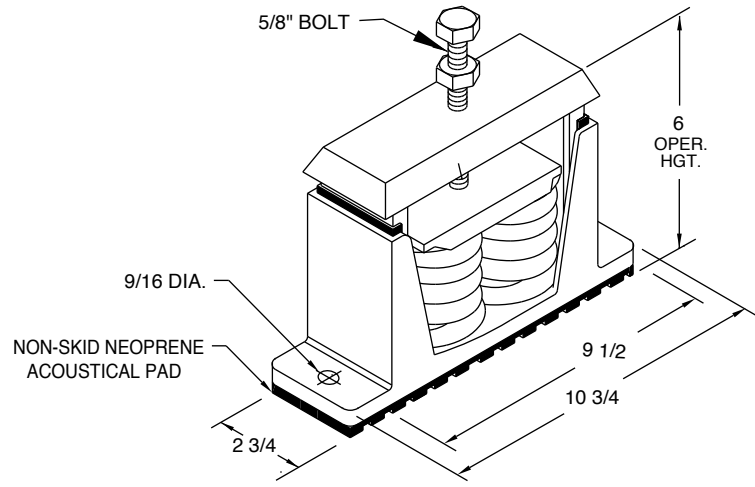


# HOUSED SPRING ISOLATORS FOR FLOOR MOUNTING

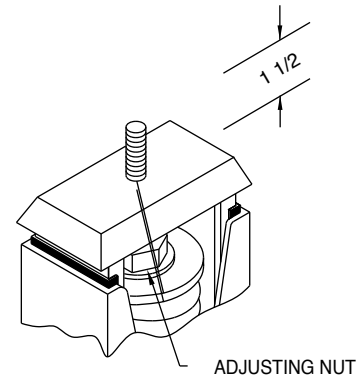


OCT1 (Fig. 47)



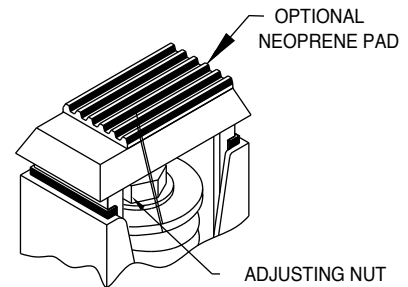
OCT2 (Fig. 48)

Fig. No.	MODEL NUMBER	COLOR CODE	RATED LOAD	RATED DEFL.	SHIP. WGT.	
47 49 50	OCT1 OCTLS1 OCTL1	1	SILVER	100 #	1.00"	9.0 #
		2	YELLOW	200 #	1.00"	
		3	RED	295 #	.80"	
		4	WHITE	380 #	.80"	
		5	GREEN	530 #	.80"	
		6	BLUE	750 #	.75"	
		7	ORANGE	1125 #	.75"	
		8	GOLD	1500 #	.75"	
47 49 50	OCT1 OCTLS1 OCTL1	F30	SILVER	155 #	1.85"	10.0 #
		F31	YELLOW	220 #	1.70"	
		F32	RED	310 #	1.55"	
		F33	WHITE	420 #	1.40"	
		F34	GREEN	540 #	1.25"	
		F35	BLUE	710 #	1.15"	
		F36	ORANGE	900 #	1.05"	
		F37	GOLD	1030 #	1.00"	
		F38	RED/SILVER	1275 #	1.00"	
		F39	RED/YELLOW	1630 #	1.00"	
		F40	RED/WHITE	2100 #	1.00"	
F41	RED/GREEN	3000 #	1.00"			
47 49 50	OCT1 OCTLS1 OCTL1	F60	SILVER	60 #	3.00"	9.0 #
		F61	YELLOW	109 #	2.72"	
		F62	RED	155 #	2.58"	
		F63	GREEN	210 #	2.32"	
		F64	BLUE	275 #	2.20"	
		F65	ORANGE	365 #	2.08"	
		F66	GOLD	500 #	2.00"	
		F67	WHITE	715 #	2.00"	
		F68	RED/SILVER	945 #	2.00"	
		F69	RED/YELLOW	1190 #	2.00"	
48 49 50	OCT2 OCTLS2 OCTL2	F37	GOLD	2060 #	1.00"	16.5 #
		F38	RED/SILVER	2550 #		
		F39	RED/YELLOW	3260 #		
		F40	RED/WHITE	4200 #		
48 49 50	OCT2 OCTLS2 OCTL2	F41	RED/GREEN	6000 #	2.00"	15.0 #
		F66	GOLD	1000 #		
		F67	WHITE	1430 #		
49 50	OCTLS2 OCTL2	F68	RED/SILVER	1890 #	2.00"	15.0 #
		F69	RED/YELLOW	2380 #		
		F69	RED/YELLOW	2380 #		



Type "OCTLS1" & "OCTLS2" with internal leveling and mounting stud.

OCTLS (Fig. 49)

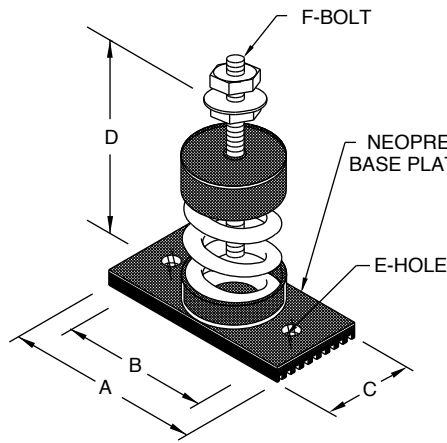


Type "OCTL1" & "OCTL2" with internal leveling and flat bearing surface. A non-skid neoprene pad can be furnished on top of isolator. If required, add "P" to model number "OCTLP1".

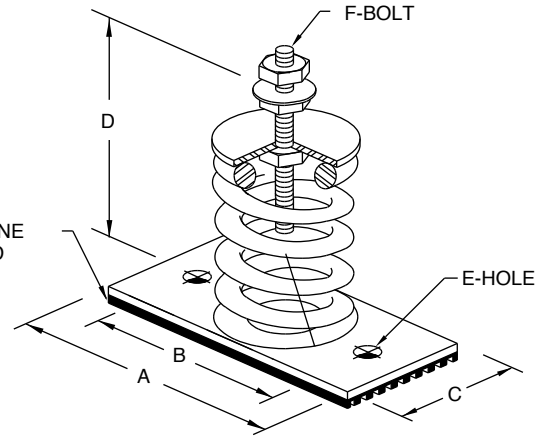
OCTLP (Fig. 50)

All springs are free standing and laterally stable.  
 (Meeting a minimum of 0.8 ratio of spring diameter to compressed height.)  
 All springs are designed to provide additional travel of 50% of rated load.  
 All hardware zinc-electroplated.  
 Color coding is identified by colored labels.

# FREE STANDING SPRING ISOLATORS FOR FLOOR MOUNTING



OST2R (Fig. 51)

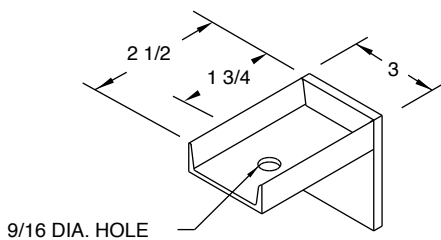


OST1, OST3 (Fig. 52)

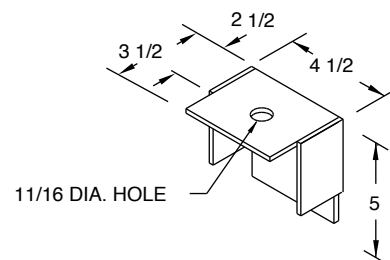
F21 to F27 springs: Color coding is identified by color of spring.  
 All others: Color coding is identified by colored label.

Fig. No.	MODEL NUMBER	COLOR CODE	RATED LOAD	RATED DEFL.	"A"	"B"	"C"	"D"	"E"	"F"	SHIP. WGT.	
52	OST1	1	SILVER	100 #	1.00"	5	4	2 1/2	5 1/4	9/16	5/8	3.5 #
		2	YELLOW	200 #	1.00"							
		3	RED	295 #	.80"							
		4	WHITE	380 #	.80"							
		5	GREEN	530 #	.80"							
		6	BLUE	750 #	.75"							
		7	ORANGE	1125 #	.75"							
		8	GOLD	1500 #	.75"							
51	OST2R	F21	YELLOW	40 #	1.00"	4	3	2 1/8	4 3/4	7/16	1/2	1.2 #
		F22	RED	100 #								
		F23	WHITE	150 #								
		F24	GREEN	210 #								
		F25	BLUE	300 #								
		F26	ORANGE	400 #								
		F27	BROWN	500 #								
52	OST3	F30	SILVER	155 #	1.85"	6	5	3	6	9/16	5/8	5.0 #
		F31	YELLOW	220 #	1.70"							
		F32	RED	310 #	1.55"							
		F33	WHITE	420 #	1.40"							
		F34	GREEN	540 #	1.25"							
		F35	BLUE	710 #	1.15"							
		F36	ORANGE	900 #	1.05"							
		F37	GOLD	1030 #	1.00"							
		F38	RED/SILVER	1275 #	1.00"							
		F39	RED/YELLOW	1630 #	1.00"							
		F40	RED/WHITE	2100 #	1.00"							
		F41	RED/GREEN	3000 #	1.00"							

All springs are free standing and laterally stable. (Meeting a minimum of 0.8 ratio of spring diameter to compressed height.)  
 All springs are designed to provide additional travel of 50% of rated load.  
 All hardware zinc-electroplated.

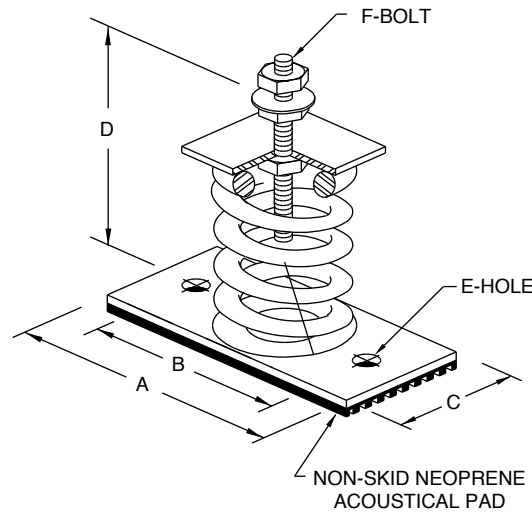


BRACKET FOR OST2R (Fig. 53)



BRACKET FOR OST1, OST3 (Fig. 54)

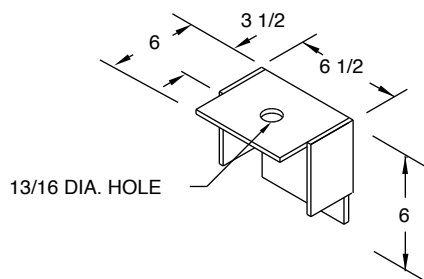
# FREE STANDING SPRING ISOLATORS FOR FLOOR MOUNTING



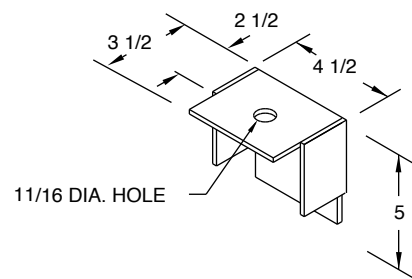
OST4, OST6 (Fig. 55)

Fig. No.	MODEL NUMBER	COLOR CODE	RATED LOAD	RATED DEFL.	"A"	"B"	"C"	"D"	"E"	"F"	SHIP. WGT.	
55	OST4	F50	SILVER	260 #	3.00"	7	6	4 1/2	8 1/4	9/16	3/4	10.5 #
		F51	YELLOW	400 #	2.80"							
		F52	RED	555 #	2.58"							
		F53	WHITE	690 #	2.42"							
		F54	GREEN	840 #	2.28"							
		F55	BLUE	1025 #	2.13"							
		F56	ORANGE	1220 #	2.00"							
		F57	GOLD	1730 #	2.16"							
		F58	RED/SILVER	2340 #	2.00"							
		F59	RED/YELLOW	3000 #	2.00"							
55	OST6	F60	SILVER	60 #	3.00"	6	5	3	7 1/4	9/16	5/8	4.0 #
		F61	YELLOW	109 #	2.72"							
		F62	RED	155 #	2.58"							
		F63	GREEN	210 #	2.32"							
		F64	BLUE	275 #	2.20"							
		F65	ORANGE	365 #	2.08"							
		F66	GOLD	500 #	2.00"							
		F67	WHITE	715 #	2.00"							
		F68	RED/SILVER	945 #	2.00"							
		F69	RED/YELLOW	1190 #	2.00"							

All springs are free standing and laterally stable. (Meeting a minimum of 0.8 ratio of spring diameter to compressed height.)  
 All springs are designed to provide additional travel of 50% of rated load.  
 All hardware zinc-electroplated.  
 Color coding is identified by colored labels.

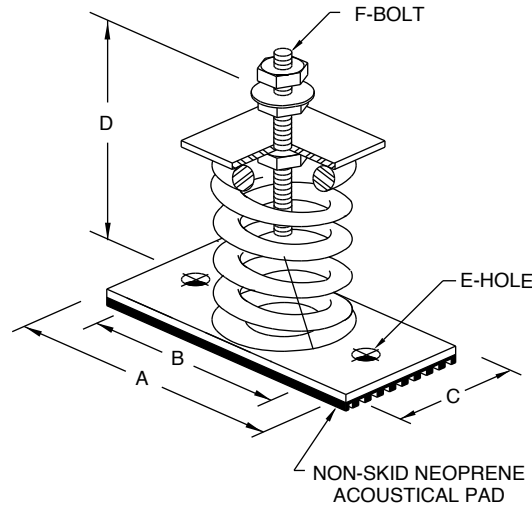


BRACKET FOR OST4 (Fig. 56)



BRACKET FOR OST6 (Fig. 57)

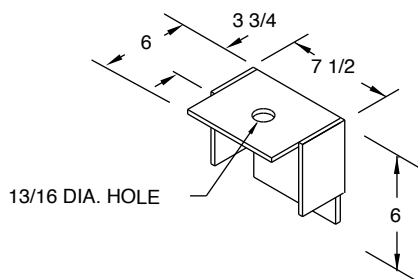
# FREE STANDING SPRING ISOLATORS FOR FLOOR MOUNTING



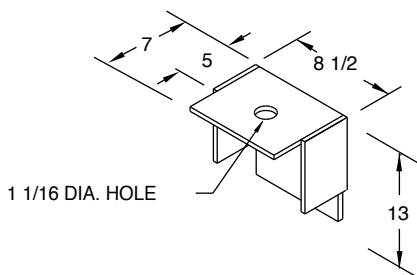
OST5, OST7, OST8 (Fig. 58)

Fig. No.	MODEL NUMBER	COLOR CODE	RATED LOAD	RATED DEFL.	"A"	"B"	"C"	"D"	"E"	"F"	SHIP. WGT.	
58	OST5 {	F91	SILVER	300 #	3.00"	8	7	5 1/2	9 1/2	9/16	3/4	10.0 #
		F92	YELLOW	600 #								
		F93	RED	975 #								
		F94	WHITE	1260 #								
		F95	GREEN	1530 #								
		F96	BLUE	1893 #								
		F97	ORANGE	2238 #								
		F98	GOLD	2634 #								
58	OST7 {	F71	SILVER	355 #	5.90"	10	8 1/2	7	13 1/4	9/16	1	36.0 #
		F72	YELLOW	770 #	5.30"							
		F73	RED	1075 #	5.00"							
		F74	WHITE	1470 #	4.75"							
		F75	GREEN	1980 #	4.50"							
		F76	BLUE	2575 #	4.20"							
		F77	ORANGE	3270 #	3.90"							
		F78	GOLD	4050 #	3.65"							
58	OST8 {	F83	RED	4775 #	4.30"	11 1/2	10	8	14 1/2	9/16	1	53.0 #
		F84	WHITE	5900 #	4.10"							

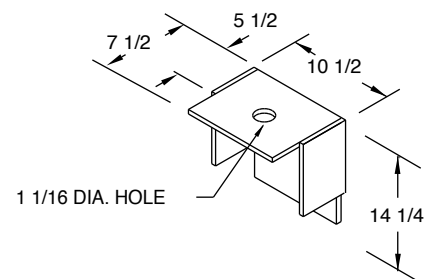
All springs are free standing and laterally stable. (Meeting a minimum of 0.8 ratio of spring diameter to compressed height.)  
 All springs are designed to provide additional travel of 50% of rated load.  
 All hardware zinc-electroplated.  
 Color coding is identified by colored labels.



BRACKET FOR OST5  
(Fig. 59)

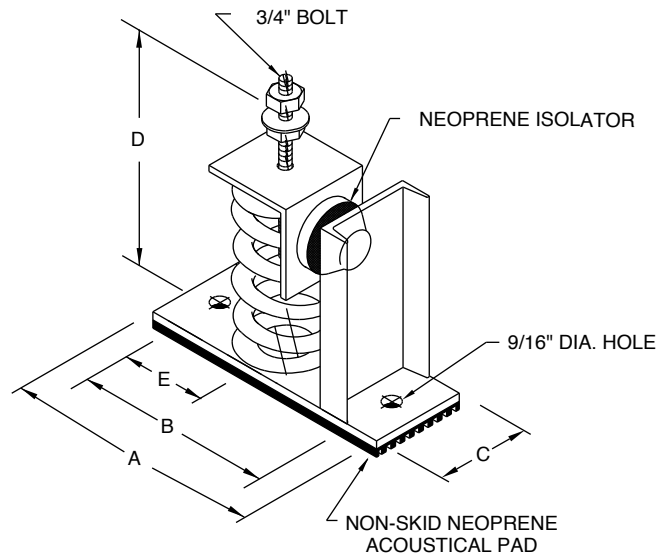


BRACKET FOR OST7  
(Fig. 60)



BRACKET FOR OST8  
(Fig. 61)

# FREE STANDING SPRING ISOLATORS WITH HORIZONTAL RESTRAINT

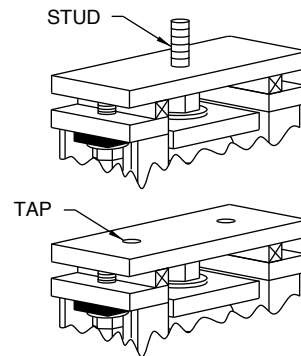
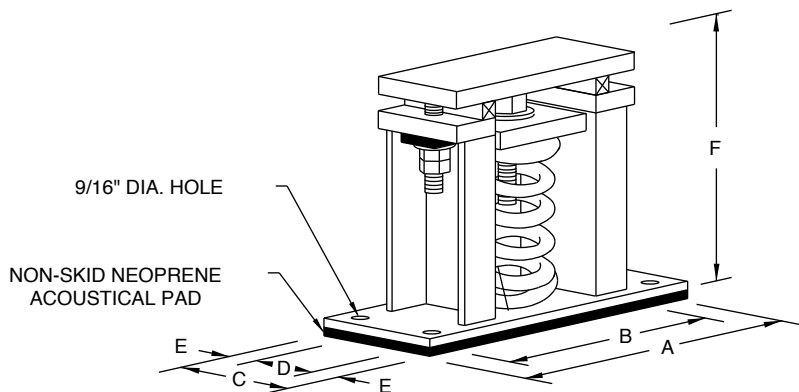


OST3-HR, OST4-HR, OST6-HR (Fig. 62)

Fig. No.	MODEL NUMBER	COLOR CODE	RATED LOAD	RATED DEFL.	"A"	"B"	"C"	"D"	"E"	SHIP. WGT.	
62	OST3-HR	F30	SILVER	155 #	1.85"	7 <sup>3</sup> / <sub>4</sub>	6 <sup>3</sup> / <sub>4</sub>	3	6	2 <sup>3</sup> / <sub>16</sub>	8.0 #
		F31	YELLOW	220 #	1.70"						
		F32	RED	310 #	1.55"						
		F33	WHITE	420 #	1.40"						
		F34	GREEN	540 #	1.25"						
		F35	BLUE	710 #	1.15"						
		F36	ORANGE	900 #	1.05"						
		F37	GOLD	1030 #	1.00"						
		F38	RED/SILVER	1275 #	1.00"						
		F39	RED/YELLOW	1630 #	1.00"						
		F40	RED/WHITE	2100 #	1.00"						
F41	RED/GREEN	3000 #	1.00"								
62	OST4-HR	F50	SILVER	260 #	3.00"	9 <sup>1</sup> / <sub>4</sub>	8 <sup>1</sup> / <sub>4</sub>	4 <sup>1</sup> / <sub>2</sub>	8 <sup>1</sup> / <sub>4</sub>	3	17.0 #
		F51	YELLOW	400 #	2.80"						
		F52	RED	555 #	2.58"						
		F53	WHITE	690 #	2.42"						
		F54	GREEN	840 #	2.28"						
		F55	BLUE	1025 #	2.13"						
		F56	ORANGE	1220 #	2.00"						
		F57	GOLD	1730 #	2.16"						
		F58	RED/SILVER	2340 #	2.00"						
		F59	RED/YELLOW	3000 #	2.00"						
62	OST6-HR	F60	SILVER	60 #	3.00"	7 <sup>3</sup> / <sub>4</sub>	6 <sup>3</sup> / <sub>4</sub>	3	7 <sup>1</sup> / <sub>4</sub>	2 <sup>1</sup> / <sub>4</sub>	8.0 #
		F61	YELLOW	109 #	2.72"						
		F62	RED	155 #	2.58"						
		F63	GREEN	210 #	2.32"						
		F64	BLUE	275 #	2.20"						
		F65	ORANGE	365 #	2.08"						
		F66	GOLD	500 #	2.00"						
		F67	WHITE	715 #	2.00"						
		F68	RED/SILVER	945 #	2.00"						
		F69	RED/YELLOW	1190 #	2.00"						

All springs are free standing and laterally stable. (Meeting a minimum of 0.8 ratio of spring diameter to compressed height.)  
 All springs are designed to provide additional travel of 50% of rated load.  
 All hardware zinc-electroplated.  
 Color coding is identified by colored labels.

# VERTICALLY RESTRAINED SPRING ISOLATORS FOR FLOOR MOUNTING



TOP PLATE CAN BE FURNISHED WITH STUD OR TAPPED TO SUIT.

KW2, KW3 (Fig. 63)

Fig. No.	MODEL NUMBER	"A"	"B"	"C"	"D"	"E"	"F"	NUMBER OF HOLES IN BASE PLATE	SHIP. WGT.
63	1KW2	6 $\frac{1}{4}$	4 $\frac{3}{4}$	2 $\frac{1}{2}$	-	1 $\frac{1}{4}$	4 $\frac{3}{4}$	2	5.0 #
	2KW2	9	7 $\frac{1}{2}$	2 $\frac{1}{2}$	-	1 $\frac{1}{4}$	4 $\frac{3}{4}$	2	9.0 #
	1KW3	9 $\frac{1}{2}$	8	3	2	1 $\frac{1}{2}$	7	4	13.0 #
	2KW3	13 $\frac{1}{2}$	12	3	2	1 $\frac{1}{2}$	7	4	22.0 #
	4KW3	11	9 $\frac{1}{2}$	6	3	1 $\frac{1}{2}$	7 $\frac{1}{2}$	4	46.0 #
	6KW3	14 $\frac{1}{2}$	13	6	3	1 $\frac{1}{2}$	7 $\frac{1}{2}$	4	50.0 #
	8KW3	17	15 $\frac{1}{2}$	6	3	1 $\frac{1}{2}$	7 $\frac{1}{2}$	4	78.0 #

NOMENCLATURE 1 KW 3 - F38

NO. SPRINGS PER UNIT

MODEL NO.

SPRING SERIES

SUFFIX SPRING NO.

Fig. No.	ISOLATOR MODEL		1KW2	2KW2				RATED DEFL. (IN.)
	MODEL NUMBER	COLOR CODE	RATED LOAD IN POUNDS					
63	KW2	F21	YELLOW	40 #	80 #			1.00"
		F22	RED	100 #	200 #			
		F23	WHITE	150 #	300 #			
		F24	GREEN	210 #	420 #			
		F25	BLUE	300 #	600 #			
		F26	ORANGE	400 #	800 #			
		F27	BROWN	500 #	1000 #			
	ISOLATOR MODEL		1KW3	2KW3	4KW3	6KW3	8KW3	
	KW3	F30	SILVER	155 #				1.85"
		F31	YELLOW	220 #				1.70"
		F32	RED	310 #				1.55"
		F33	WHITE	420 #				1.40"
		F34	GREEN	540 #				1.25"
		F35	BLUE	710 #				1.15"
		F36	ORANGE	900 #				1.05"
F37		GOLD	1030 #				1.00"	
F38	RED/SILVER	1275 #	2550 #	5100 #	7650 #	10200 #	1.00"	
F39	RED/YELLOW	1630 #	3260 #	6520 #	9780 #	13040 #	1.00"	
F40	RED/WHITE	2100 #	4200 #	8400 #	12600 #	16800 #	1.00"	
F41	RED/GREEN	3000 #	6000 #	12000 #	18000 #	24000 #	1.00"	

All springs are free standing and laterally stable. (Meeting a minimum of 0.8 ratio of spring diameter to compressed height.)  
 All springs are designed to provide additional travel of 50% of rated load.  
 All hardware zinc-electroplated.  
 Color coding is identified by colored labels.

# VERTICALLY RESTRAINED SPRING ISOLATORS FOR FLOOR MOUNTING

TOP PLATE CAN BE FURNISHED WITH STUD OR TAPPED TO SUIT.

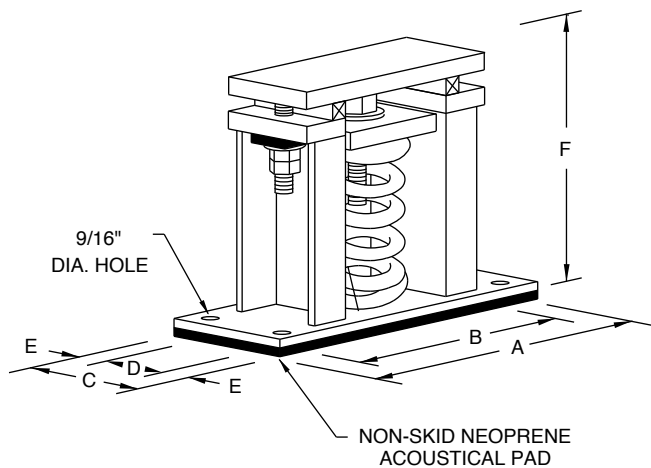


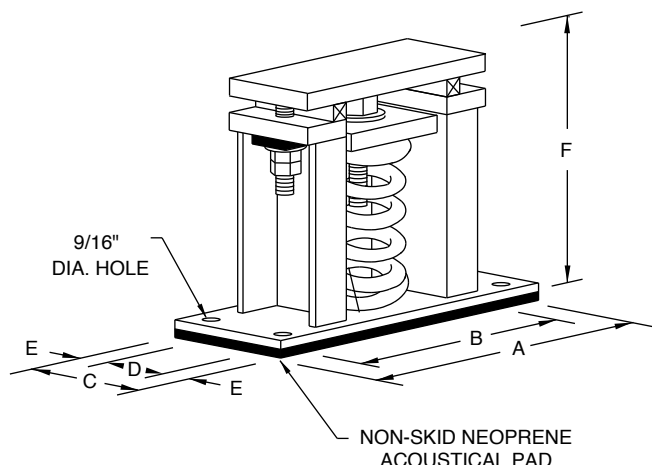
Fig. No.	MODEL NUMBER	"A"	"B"	"C"	"D"	"E"	"F"	NUMBER OF HOLES IN BASE PLATE	SHIP. WGT.
64	1KW4	11 $\frac{3}{4}$	10 $\frac{1}{4}$	4 $\frac{1}{2}$	3	3 $\frac{3}{4}$	9 $\frac{1}{2}$	4	28 #
	2KW4	16 $\frac{1}{2}$	15	4 $\frac{1}{2}$	3	3 $\frac{3}{4}$	9 $\frac{1}{2}$	4	48 #
	3KW4	19	17 $\frac{1}{2}$	6	3	1 $\frac{1}{2}$	9 $\frac{1}{2}$	4	72 #
	4KW4	14	12 $\frac{1}{2}$	10	8 $\frac{1}{2}$	3 $\frac{3}{4}$	9 $\frac{1}{2}$	4	105 #
	6KW4	19	17 $\frac{1}{2}$	10	8 $\frac{1}{2}$	3 $\frac{3}{4}$	10	4	117 #
	8KW4	24	22 $\frac{1}{2}$	10	8 $\frac{1}{2}$	3 $\frac{3}{4}$	10	4	164 #
	1KW6	9 $\frac{1}{2}$	8	3	2	1 $\frac{1}{2}$	8	4	13 #
	2KW6	13 $\frac{1}{2}$	12	3	2	1 $\frac{1}{2}$	8	4	22 #
	1KW10	7 $\frac{1}{2}$	6	3	-	1 $\frac{1}{2}$	6	2	8 #

Fig. No.	ISOLATOR MODEL		1KW4	2KW4	3KW4	4KW4	6KW4	8KW4	RATED DEFL. (IN.)	
	MODEL NUMBER	COLOR CODE	RATED LOAD IN POUNDS							
64	KW4	F50	SILVER	260 #					3.00"	
		F51	YELLOW	400 #					2.80"	
		F52	RED	555 #					2.58"	
		F53	WHITE	690 #					2.42"	
		F54	GREEN	840 #					2.28"	
		F55	BLUE	1025 #					2.13"	
		F56	ORANGE	1220 #	2440 #	3660 #			2.00"	
		F57	GOLD	1730 #	3460 #	5190 #	6920 #	10380 #	13840 #	2.16"
		F58	RED/SILVER	2340 #	4680 #	7020 #	9360 #	14040 #	18720 #	2.00"
	F59	RED/YELLOW	3000 #	6000 #	9000 #	12000 #	18000 #	24000 #	2.00"	
	ISOLATOR MODEL			1KW6	2KW6					
	KW6	F60	SILVER	60 #						3.00"
		F61	YELLOW	109 #						2.72"
		F62	RED	155 #						2.58"
		F63	GREEN	210 #						2.32"
		F64	BLUE	275 #						2.20"
		F65	ORANGE	365 #	730 #					2.08"
		F66	GOLD	500 #	1000 #					2.00"
		F67	WHITE	715 #	1430 #					2.00"
F68		RED/SILVER	945 #	1890 #					2.00"	
F69	RED/YELLOW	1190 #	2380 #					2.00"		
ISOLATOR MODEL			1KW10							
KW10	V40	SILVER	40 #						2.00"	
	V41	YELLOW	80 #							
	V42	RED	120 #							
	V43	GREEN	180 #							
	V44	BLUE	250 #							
V45	ORANGE	350 #								

All springs are free standing and laterally stable. (Meeting a minimum of 0.8 ratio of spring diameter to compressed height.)  
 All springs are designed to provide additional travel of 50% of rated load.  
 All hardware zinc-electroplated.  
 Color coding is identified by colored labels.

# VERTICALLY RESTRAINED SPRING ISOLATORS FOR FLOOR MOUNTING

TOP PLATE CAN BE FURNISHED WITH STUD OR TAPPED TO SUIT.



KW5, KW7, KW8 (Fig. 65)

Fig. No.	MODEL NUMBER	"A"	"B"	"C"	"D"	"E"	"F"	SHIP. WGT.
65	1KW5	13	11 1/2	6	3 1/2	1 1/4	10	47 #
	2KW5	19	17 1/2	6	3 1/2	1 1/4	10	138 #
	1KW7	12	10 1/2	7	3 1/2	1 3/4	14 1/2	89 #
	2KW7	19 1/2	18	7	3 1/2	1 3/4	14 1/2	116 #
	1KW8	14	12 1/2	8	3 1/2	2 1/4	15 1/2	108 #
	2KW8	22 1/2	21	8	3 1/2	2 1/4	15 1/2	240 #

All isolators have 4 holes in base plate.

Fig. No.	ISOLATOR MODEL		1KW5	2KW5	RATED DEFL. (IN.)	
	MODEL NUMBER	COLOR CODE	RATED LOAD			
65	KW5	F91	SILVER	300 #		3.00"
		F92	YELLOW	600 #		
		F93	RED	975 #	1950 #	
		F94	WHITE	1260 #	2520 #	
		F95	GREEN	1530 #	3060 #	
		F96	BLUE	1893 #	3786 #	
		F97	ORANGE	2238 #	4476 #	
		F98	GOLD	2634 #	5268 #	
	ISOLATOR MODEL			1KW7	2KW7	
	KW7	F71	SILVER	355 #		5.90"
		F72	YELLOW	770 #		5.30"
		F73	RED	1075 #		5.00"
		F74	WHITE	1470 #	2940 #	4.75"
		F75	GREEN	1980 #	3960 #	4.50"
		F76	BLUE	2575 #	5150 #	4.20"
F77		ORANGE	3270 #	6540 #	3.90"	
F78		GOLD	4050 #	8100 #	3.65"	
ISOLATOR MODEL			1KW8	2KW8		
KW8	F83	RED	4775 #	9440 #	4.30"	
	F84	WHITE	5900 #	11800 #	4.10"	

All springs are free standing and laterally stable. (Meeting a minimum of 0.8 ratio of spring diameter to compressed height.)  
 All springs are designed to provide additional travel of 50% of rated load.  
 All hardware zinc-electroplated.  
 Color coding is identified by colored labels.

For greater deflections and/or loads refer to factory.