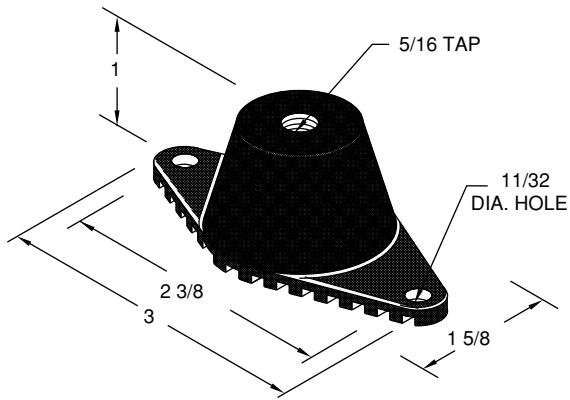
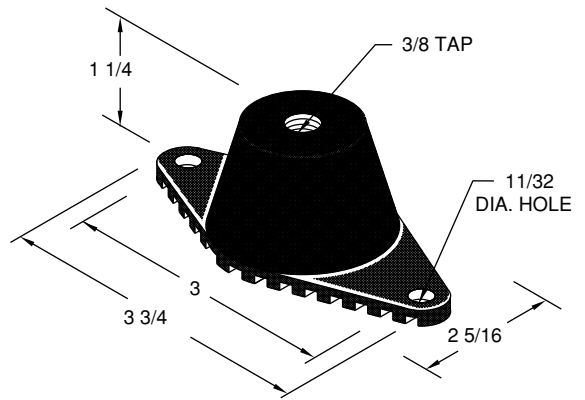


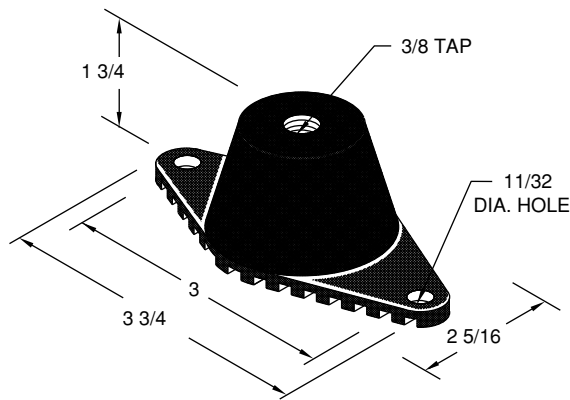
NEOPRENE ISOLATORS FOR FLOOR MOUNTING



T22 (Fig. 1)



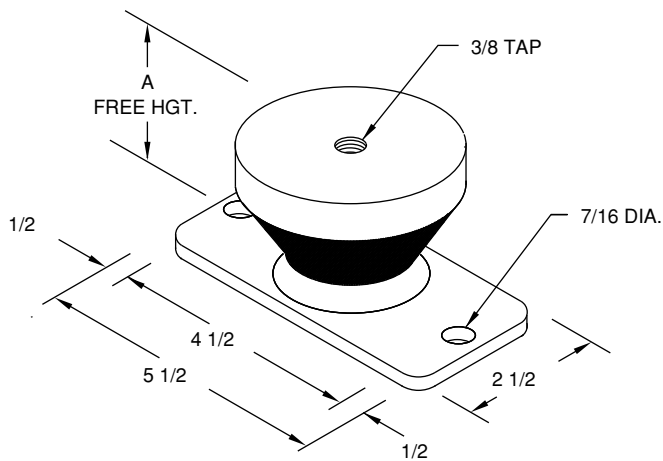
T44 (Fig. 2)



D44 (Fig. 3)

| Fig. No. | MODEL NUMBER | COLOR CODE | RATED LOAD | RATED DEFL. | SHIP. WGT. |
|----------|--------------|--|----------------------------------|-------------|------------|
| 1 | T22 | BLACK | 40 # | .25" | .1 # |
| 2 | T44 | 3A BLACK 5A BLUE 7A GREEN 8A ORANGE | 100 # 150 # 300 # 400 # | .25" | .3 # |
| 3 | D44 | 3A BLACK 5A BLUE 7A GREEN 8A ORANGE | 100 # 150 # 300 # 400 # | .50" | .35 # |

Note: Color coding is identified by color of rubber.

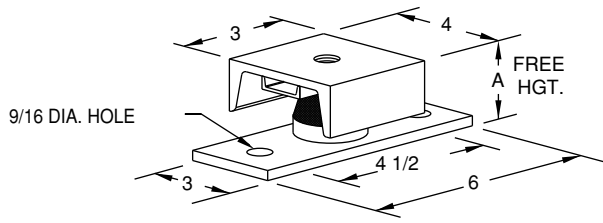


368S & 368TD
(Fig. 4)

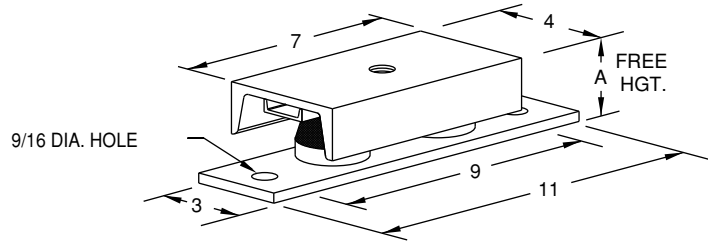
| Fig. No. | MODEL NUMBER | COLOR CODE | RATED LOAD | RATED DEFL. | "A" | SHIP. WGT. |
|----------|--------------|------------|------------|-------------|--------|------------|
| 4 | 368S | 1 WHITE | 150 # | .25" | 2" | 1.3 # |
| | | 2 GREEN | 350 # | | | |
| | | 3 BLUE | 550 # | | | |
| | | 4 ORANGE | 900 # | | | |
| | 368TD | 1 WHITE | 150 # | .50" | 2 5/8" | 1.4 # |
| | | 2 GREEN | 350 # | | | |
| | | 3 BLUE | 550 # | | | |
| | | 4 ORANGE | 900 # | | | |

Notes: Color coding is identified by colored label.
All steel parts zinc-electroplated.

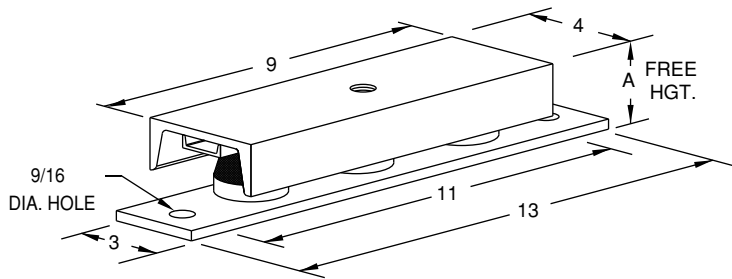
NEOPRENE ISOLATORS FOR FLOOR MOUNTING



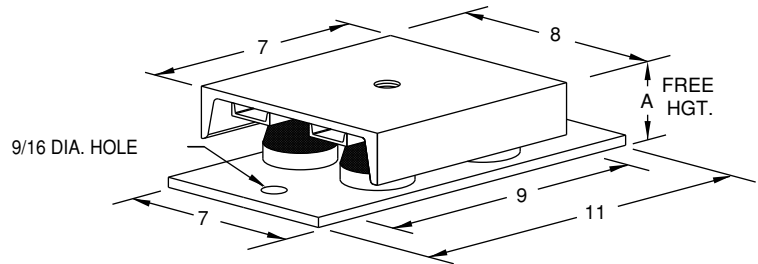
140S, 140TD (Fig. 5A)



240S, 240TD (Fig. 5B)



340S, 340TD (Fig. 5C)



440S, 440TD (Fig. 5D)

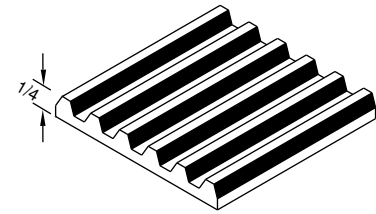
Notes: All mounts supplied with 1/2" diameter tap.
Color coding is identified by colored label.

| Fig. No. | MODEL NUMBER | COLOR CODE | RATED LOAD | RATED DEFL. | "A" | SHIP. WGT. |
|----------|--------------|------------|------------|-------------|--------|------------|
| 5A | 140S | 1 WHITE | 150 # | .25" | 2 5/8" | 3.5 # |
| | | 2 GREEN | 350 # | | | |
| | | 3 BLUE | 550 # | | | |
| | | 4 ORANGE | 900 # | | | |
| 5B | 240S | 2 GREEN | 700 # | .25" | 2 5/8" | 7.0 # |
| | | 3 BLUE | 1100 # | | | |
| | | 4 ORANGE | 1800 # | | | |
| 5C | 340S | 3 BLUE | 1650 # | .25" | 2 5/8" | 9.0 # |
| | | 4 ORANGE | 2700 # | | | |
| 5D | 440S | 3 BLUE | 2200 # | .25" | 2 5/8" | 13.0 # |
| | | 4 ORANGE | 3600 # | | | |

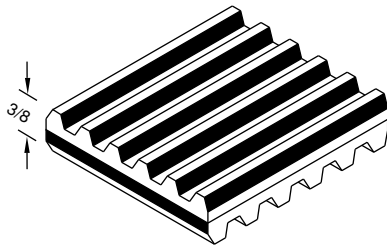
| Fig. No. | MODEL NUMBER | COLOR CODE | RATED LOAD | RATED DEFL. | "A" | SHIP. WGT. |
|----------|--------------|------------|------------|-------------|-----|------------|
| 5A | 140TD | 1 WHITE | 150 # | .50" | 3" | 3.5 # |
| | | 2 GREEN | 350 # | | | |
| | | 3 BLUE | 550 # | | | |
| | | 4 ORANGE | 900 # | | | |
| 5B | 240TD | 2 GREEN | 700 # | .50" | 3" | 7.5 # |
| | | 3 BLUE | 1100 # | | | |
| | | 4 ORANGE | 1800 # | | | |
| 5C | 340TD | 3 BLUE | 1650 # | .50" | 3" | 9.5 # |
| | | 4 ORANGE | 2700 # | | | |
| 5D | 440TD | 3 BLUE | 2200 # | .50" | 3" | 14.0 # |
| | | 4 ORANGE | 3600 # | | | |

NEOPRENE PADS FOR FLOOR MOUNTING

100N- Here is an inexpensive corrugated oil resistant neoprene padding only 1/4" thick. One side is smooth and can be cemented to the machine foot and the resulting exposed corrugations tend to prevent machine walking without lagging. 100N is stocked in 12" x 36" sheets and rolls 12" wide by 10 ft. long.

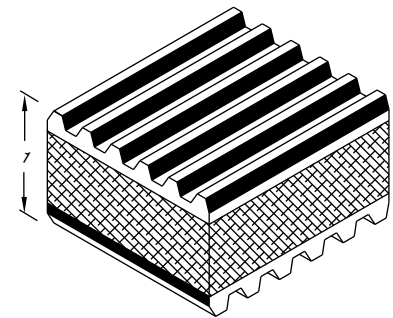


100N (Fig. 6)



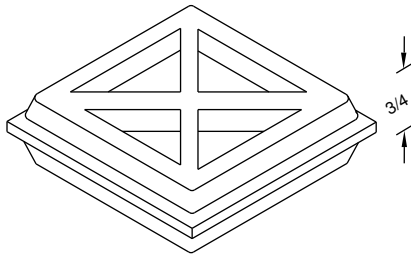
200N (Fig. 7)

200N- These pads are 3/8" thick oil resistant neoprene with both surfaces corrugated and ribs running 90 degrees to each other. The advantage of the 3/8" thickness makes this material more efficient than the 100N pad. 200N pad stocked in 18" x 18" sheets.



300N (Fig. 8)

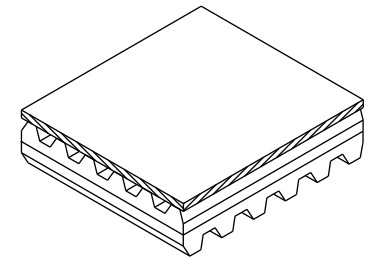
300N- A half inch thick high grade fine granular composition cork sandwiched between two 1/4" layers of corrugated, oil resistant neoprene, which effectively minimizes vibration and noise transmission. 300N is stocked in 12" x 36" sheets.



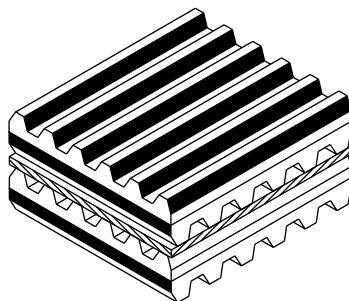
400N (Fig. 9)

400N- (BIG BLUE) A 3/4" thick blue color oil resistant neoprene pads that are available in standard sheets of 18" x 18". Each pad consists of 36-3" x 3" individual squares which can be easily cut with a utility knife. This is the most resilient neoprene pad.

TYPE "P"- Load transfer plates can be supplied with all pads. This steel plate helps to distribute the supported load evenly over the entire face area of the pad and is used most often when the bearing area of the machine leg is smaller than the isolation pad.



TYPE "P" (Fig. 10)

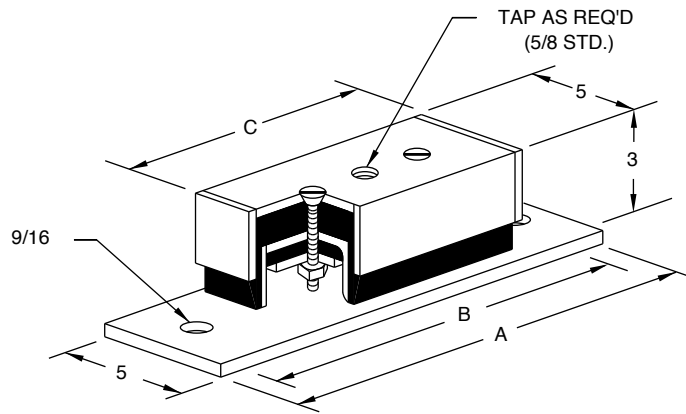


MULTIPLE LAYERS (Fig. 11)

MULTIPLE LAYERS-of the four basic pads are available and are provided with a 1/16" steel separator cemented between layers. Such arrangements are most suitable for applications requiring higher deflections and isolation efficiencies than are possible with single pad layers.

The 100N, 200N and 300N pads may be loaded to 50 psi., except for impact machines which should be loaded to 25 psi. The 400N pad may be loaded to 45 psi.

NEOPRENE MOUNTS FOR HEAVY DUTY APPLICATIONS



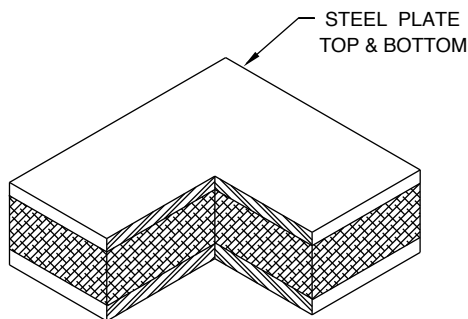
SM (Fig. 25)

| Fig. No. | MODEL NUMBER | "A" | "B" | "C" | RATED LOAD | RATED DEFL. | SHIP. WGT. |
|----------|--------------|--------|-------|-----|------------|-------------|------------|
| 25 | SM-1 | 9 | 7 1/2 | 6 | 4000 # | .10" | 12 # |
| | SM-2 | 11 1/2 | 10 | 9 | 6400 # | | 15 # |

The "SM" mount is a completely steel enclosed unit employing the highest quality neoprene in a captive all directional mount design. This mount employs the "FP" pads designed by the Vibration Eliminator Company, Inc. for high load capacity with deflections that permit selections in the 7 through 15 cycle per second natural frequency range. This makes the "SM" mount ideal for shipboard use under main propulsion engines, diesel generators and related equipment.

In the industrial field the "SM" mount serves as an ideal isolator for use under punch presses, grinders, lathes, injection molding machines, etc. Because of its captive features, once attached to a machine it need not be removed when relocating the machinery.

The "SM" mount is also used to protect shipments in transit and upon arrival it serves as a vibration eliminator under equipment such as diesel generators.



FP (Fig. 26)

| Fig. No. | MODEL NUMBER | PAD SIZE L x W x H | RATED LOAD | RATED DEFL. | SHIP. WGT. |
|----------|--------------|-----------------------|------------|-------------|------------|
| 26 | FPA-1 | 4 x 4 x 1 3/8 | 2400 # | .10" | 3.0 # |
| | FPA-2 | 6 x 6 x 1 3/8 | 5400 # | | 7.0 # |
| | FPA-3 | 8 x 8 x 1 3/8 | 9600 # | | 12.0 # |
| | 2FPA-1 | 4 x 4 x 2 3/8 | 2400 # | .20" | 4.5 # |
| | 2FPA-2 | 6 x 6 x 2 3/8 | 5400 # | | 9.5 # |
| | 2FPA-3 | 8 x 8 x 2 3/8 | 9600 # | | 18.0 # |

"FP" isolators consist of the highest quality neoprene molded to specifications establishing shape factors which control the lead deflection characteristics for the mounts. The rubber is sandwiched between two steel plates.

"FP" mounts may be any desired dimensions and/or load capacity. Selection and distribution of the inserts should be made in cooperation with our engineering department to assure best results for each application. Some typical applications of "FP" mounts include the support of punch presses to 3000 ton capacity, centrifugal refrigeration compressors, building columns, diesel engine generators, pipe risers, injection molders and numerous others. Each case is given individual attention and recommendations are accompanied by drawings illustrating correct applications.